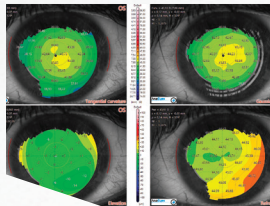


CORNEA 550⁺

PRECISE DIAGNOSTIC TOOL FOR
EFFORTLESS CONTACT LENS FITTING

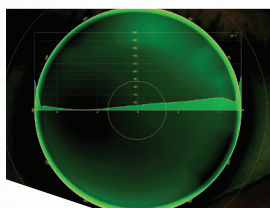


PRECISE EVALUATION OF THE CORNEAL SURFACE



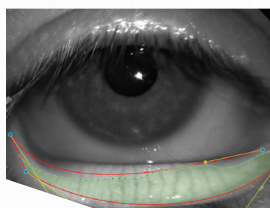
- Corneal topography, including a variety of graphic presentations to facilitate anterior segment evaluation.
- Keratoconus screening module providing insightful pre-op information facilitating more informed clinical decisions.
- Enhanced repeatability enabled by a newer focus design and higher image resolution.

STREAMLINED CONTACT LENS FITTING PROCESS



- The fluorescein image simulation helps the practitioner to choose the most adequate lens from an extensive contact lenses library, comprising 27 brands.
- Dynamic and static capture of pupillary reactions for different light conditions (photopic, mesopic and scotopic).

ADVANCED TEAR FILM ANALYSIS FOR DRY EYE DIAGNOSIS



- Non-invasive measurement of the tear film break-up time (NIBUT) supported with videos and pictures.
- Meibography including grading color scale to evaluate the gland loss.
- The lipid layer is assessed with the optional auxiliary cone.

A VALUABLE TOOL TO FACILITATE COMMUNICATION



- Paired with a high-definition screen, enabling easy exchanges of information.
- Comprehensive and intuitive graphic representations to enhance your expertise.

SPECIFICATIONS

Light source:

- White light for corneal topography and videokeratoscopy
- Blue light (470 nm) for pictures and video in fluorescein
- IR LED (940 nm) for pupillometry and meibography

Digital camera:

Color, high resolution (1024 x 960)

Measurement points:

6144

Working distance:

74 mm

PC connection:

USB 3.0

Dimensions & weight:

20.1 (H) x 8.1 (W) x 12.6 in (D) - 13 lbs approx

MINIMUM HARDWARE AND SOFTWARE REQUIREMENTS

PC desktop:

Processor Intel® Pentium Dual Core™ 2.00 GHz - 2 GB RAM • Processor Intel® Pentium i3 or higher (i5 suggested) • 4 GB RAM or more (8GB suggested) • Video board 512 MB RAM (not shared) resolution 1280x1024 pixels.

Software:

Windows® 10 x64 • Windows® 8 x64 • Windows® 7 Home and Pro 32 bit and 64 bit.

As improvements are made, these specifications and pictures are not contractually-binding and may be changed without prior notice. Windows® is a trademark of Microsoft Corporation. Pentium® is a trademark of Intel Corporation.

CE 0051

This is a medical device MDD class IIa intended for ocular topography. Legal manufacturer : C.S.O. SRL
For professional use only. Read instructions carefully for use.



NETWORK

