

SL 300 SL 400



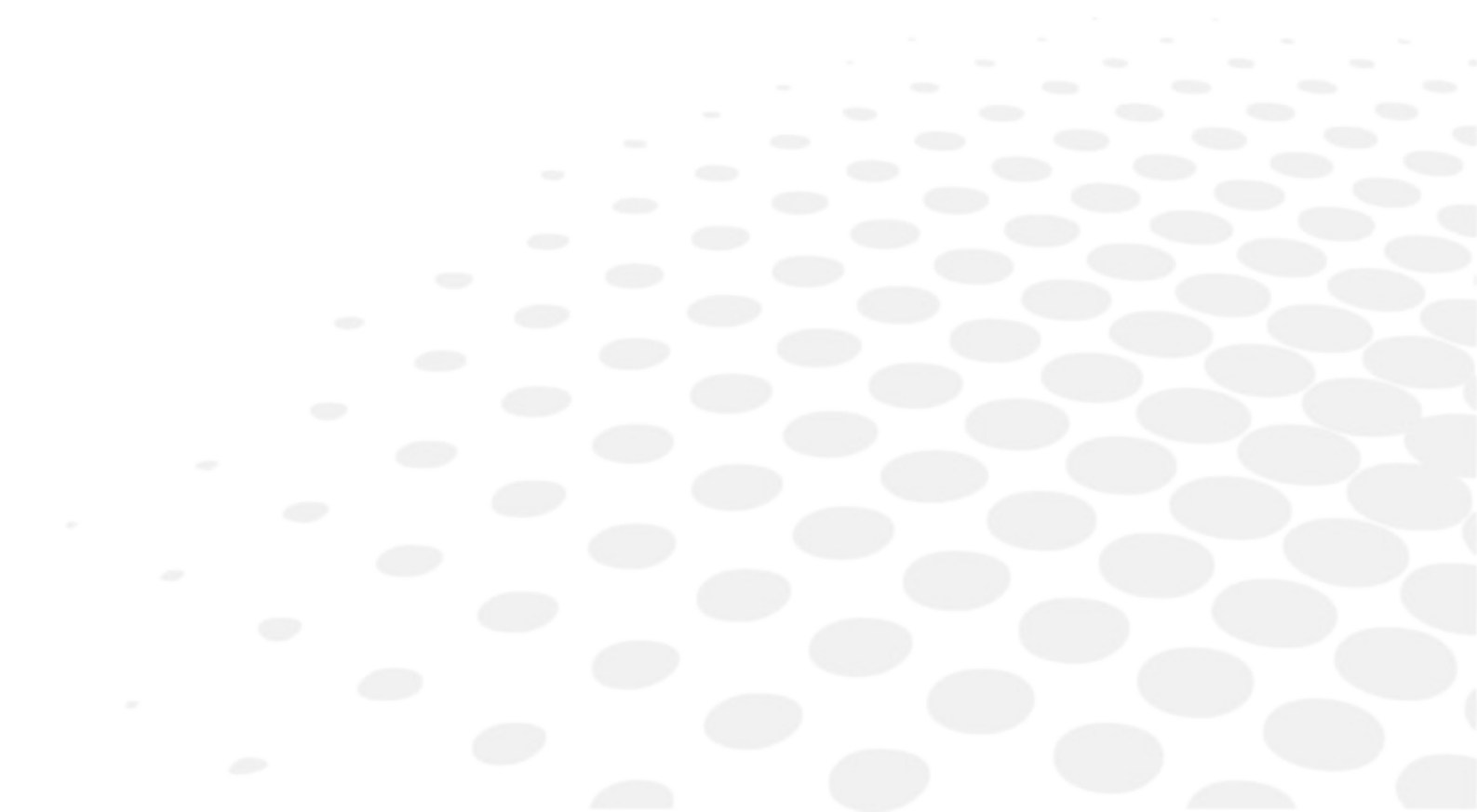
User manual




CONTENTS

I. INTRODUCTION	5
1. General description	6
2. Instrument classification	6
3. Specifications	7
a. Microscope	7
b. Slit illumination	7
c. Base	7
d. Chinrest	8
e. Power	8
f. Output voltage	8
g. Dimension and weight	8
h. Environmental conditions	8
II. SAFETY AND PRECAUTIONS	9
1. Precautions	10
2. Safety marks	11
3. EMC precautions	11
4. WEE precautions	11
5. Technical specifications	12
6. Marks on device	12
7. Indicator lamp	13
8. Installation and working condition	13
9. Component list	13
10. Transport and storage	13
III. NOMENCLATURE	15
IV. ASSEMBLY	19
1. Main parts check list	20
2. Assembly procedure	21
3. Checking procedure	25
V. OPERATION PROCEDURES	27
1. Preparation for diopter compensation and IPD adjustment	28
2. Patient position and use of the fixation point	30
3. Base operation	30
4. Operation of illumination system	31
5. Tips of operation process	32
VI. CLEANING	33
1. Method	34
2. Cleaning cycle	35
VII. MAINTENANCE	37

1. Protection	38
2. How to replace the fuse	38
3. How to replace the chinrest paper	39
4. Consumables	39
VIII. TROUBLESHOOTING GUIDE	41
IX. APPENDIX	43

I. INTRODUCTION



	The complete user manual is available on a web space. To access, please scan the QR code below using a dedicated application.
	Le manuel utilisateur complet est disponible sur un espace web. Pour y accéder veuillez scanner le QR code ci-dessous à l'aide d'une application dédiée.
	O manual do usuário completo está disponível na área web do cliente. Para acessar, scanear o código QR abaixo usando a respectiva aplicação.



1. GENERAL DESCRIPTION

- This user manual is relevant for product ref SL300L and SL400L. It is based on relevant technical specification and operation of the product.
- The classification of this instrument according to IEC 60601-1 is specified in this manual.
- Labels and marks required by IEC 60601-1 standard is stuck on the instruments and described in this user manual.
- Working principle:
A beam of light attached to the slit lamp projects to the patients' eye, which forms an optical section of the living tissue of the eye, in this way the doctor can finish the observation and examination.
- Slit lamp microscopes are used to observe the disease of the anterior structures and tissue damage of eyes.

2. INSTRUMENT CLASSIFICATION

This instrument is categorized to class I Type B according to IEC 60601-1 standard, which can not be used under two circumstances:

1. A flammable anesthetic gas and air mixture,
2. Oxygen or nitrous oxide gas and air mixture.

This instrument can be powered continuously. It doesn't belong to category AP or APG.

3. SPECIFICATIONS

a. Microscope

TECHNICAL DATA	VALUE
Type	Galilean type
Magnification change	SL300L: Three steps revolving drum SL400L: Five steps revolving drum
Eyepieces	12.5X
Angle between eyepieces	13°
Total magnification ratio	SL300L: 10X, 16X, 25X SL400L: 6X, 10X, 16X, 25X, 40X
Pupillary adjustment	52 mm ~78 mm
Diopter adjustment	± 6D
Field of view	SL300L: 25X (Ø8.5 mm), 16X (Ø13.5 mm), 10X (Ø22 mm) SL400L: 40X (Ø5.5 mm), 25X (Ø8.5 mm), 16X (Ø13.5 mm), 10X (Ø22 mm), 6X (Ø34.7 mm)

b. Slit illumination

TECHNICAL DATA	VALUE
Slit width	Continuously variable from 0 to 14 mm (at 14 mm, slit becomes a circle)
Slit length	Continuously variable from 1 mm to 14 mm
Aperture diameters	Ø14 mm, Ø8 mm, Ø 3.5 mm, Ø 0.2 mm
Slit angle	0° - 180°
Filters	Heat-absorbing filter, red-free filter, Cobalt blue filter
Lamp	3V / 3W LED lamp
Luminance	≥60 klx

c. Base

TECHNICAL DATA	VALUE
Longitudinal movement	110 mm
Lateral movement	110 mm
Fine base movement	15 mm
Vertical movement	30 mm

d. Chinrest

TECHNICAL DATA	VALUE
Vertical movement	80 mm
Fixation target	LED

e. Power

TECHNICAL DATA	VALUE
Input voltage	220V / 110V ~ ± 10%
Input frequency	50Hz / 60Hz
Power consumption	10VA (max)

f. Output voltage

TECHNICAL DATA	VALUE
Light	3V (continuously adjustable)
Fixation	3V

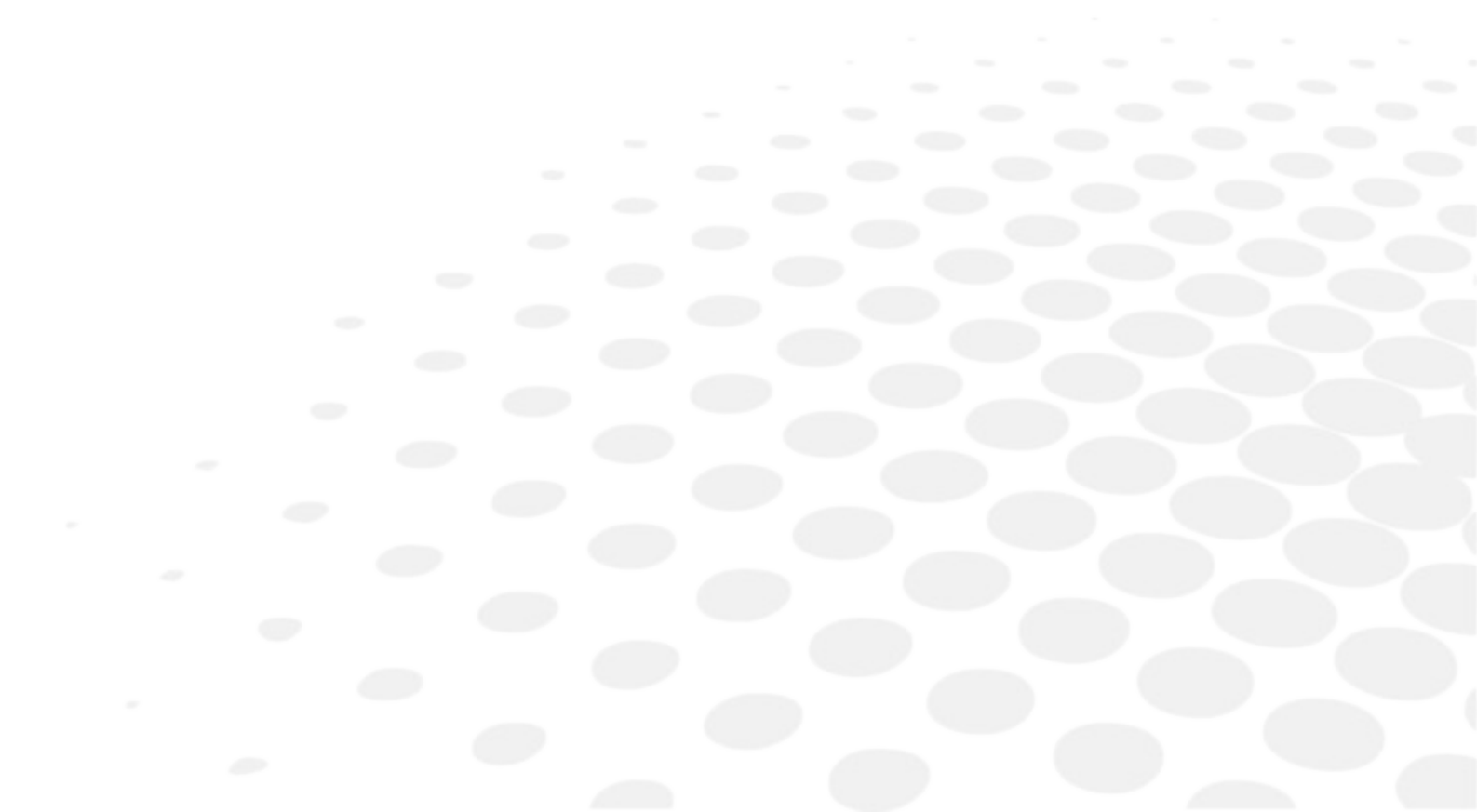
g. Dimension and weight

TECHNICAL DATA	VALUE
Dimension	740 mm x 450 mm x 550 mm
Gross weight	22 Kg
Net weight	16 Kg

h. Environmental conditions

PHASE	TECHNICAL DATA	VALUE
Transport	Temperature	-40°C ~ +55°C
	Atmospheric pressure	800 hPa ~ 1060hpa
	Relative humidity	≤90%
Storage	Temperature	-40°C ~ +55°C
	Atmospheric pressure	800 hPa ~ 1060hpa
	Relative humidity	≤90%
Use	Temperature	+5°C ~ +40°C
	Atmospheric pressure	800 hPa ~ 1060hpa
	Relative humidity	≤90%

II. SAFETY AND PRECAUTIONS



**General requirements for safety**






Please read carefully about following precautions to avoid unexpected personal injury as well as the product being damaged and other possible dangers.

1. PRECAUTIONS

1. In case there is any trouble, please first refer to the trouble-shooting guide. If it still can't work, please contact with the authorized distributor or our repair department.
2. Do not use this instrument in the environment prone to fire and blast or where there is much dust and with high temperature. Use it in room and simultaneously be careful to keep it clean and dry.
3. Check that all the wires are correctly and firmly connected before using. Ensure that the instrument is well grounded.
4. Please pay attention to all the ratings of the electrical connecting terminal.
5. Turn OFF the main power first before replacing the main bulb, flash lamp and fuse.
6. When replacing the power cable, please use the power cable in accordance with the notes in the instruction manual.
7. Don't touch the surface of the lens and prism with hand or hard objects.
8. Please be careful when using the moving parts of the slit lamp, in case that the movement of the base or microscope arm hurts people.
9. To prevent the instrument from falling down to floor, it should be placed on the floor where the inclination angle is less than 10°.
10. Please deal with the waste disposal produced by the machine following relevant laws and regulations.
11. Read carefully the safety and other signals on this machine in order to use the product safely.

2. SAFETY MARKS

The safety marks, icons and warning symbols stuck on this instrument.

MARK	DESCRIPTION
	Type B
	Manufacturing date
Class I	The slit lamp is class I medical device
Type B	English form of B type
	WEEE mark: Please deal with the waste disposal produced by the machine following relevant laws and regulations.
	CE marking according to applicable directives Date of first marking 12/2015
PN	Part number
SN	Serial number
I	Power ON
O	Power OFF
Output	At the back of power supply box, indicate outlet of the power
Input	At the back of power supply box, indicate input of the power
Fuse	Rated value and current value (F1AL250V)
Power	At the front of power supply box, switch the power ON and OFF
Voltage selector	Switch the input voltage from 110V to 220V
	The mark of light dimmer

3. EMC PRECAUTIONS

Other medical instruments and equipment which needs to be installed on the same site using with this instrument shall comply with the same electromagnetic compatibility principle. The equipment which is unable to comply with the electromagnetic compatibility or is known with poor electromagnetic compatibility shall be installed 3 meters at least away from this equipment and powered by different power supply.

4. WEE PRECAUTIONS

Please dispose the waste electrical and electronic equipment in accordance with relevant regulations and laws.

5. TECHNICAL SPECIFICATIONS

The slit lamp microscope is powered by network power supply. The following marks are required permanently affixed to the instruments according to IEC 60601-1 Standard. The following table lists the tips for your reference.

N°	CONTENT	INSTRUCTIONS
1	Manufacturer/ supplier	Not brand
2	Figure /icon/ mark	Detail in safety marks table
3	Connect to main power	Detail in power specification
4	Power frequency, Hz	Detail in power specification
5	Input power frequency	Detail in power specification
6	Network output power	N/A
7	Classification	Detail in safety marks table
8	Working time	No indication, work continuously
9	Fuse	Detail in safety marks table
10	Output	Detail in safety marks table
11	Physiological reaction	No indication. N/A
12	AP/AGP type device	No indication. N/A
13	High pressure terminal device	No indication. N/A
14	Cooling condition	No indication. N/A
15	Mechanical stability	No indication.
16	Protective packing	Transportation are affixed to the outer packing carton, which includes up, fragile, afraid of the rain, stacking limit, stacking weight limit and so on.

6. MARKS ON DEVICE

The marks on power box of slit lamps.

MARK	DESCRIPTION
	Protective earth terminal

7. INDICATOR LAMP

There is indicator lamp on power switch. Green light indicates the power is on, and the instrument is working.

- Model SL300L, when operating at maximum intensity, exceeds the threshold set by the safety guidelines after 168 seconds.
- Model SL400L, when operating at maximum intensity, exceeds the threshold set by the safety guidelines after 168 seconds.

8. INSTALLATION AND WORKING CONDITION

Slit lamps are network powered medical instrument. Please check pert the checking list after opening the carton and install the instrument according to this user manual. Test and ensure the instrument operating well before putting to use.

9. COMPONENT LIST

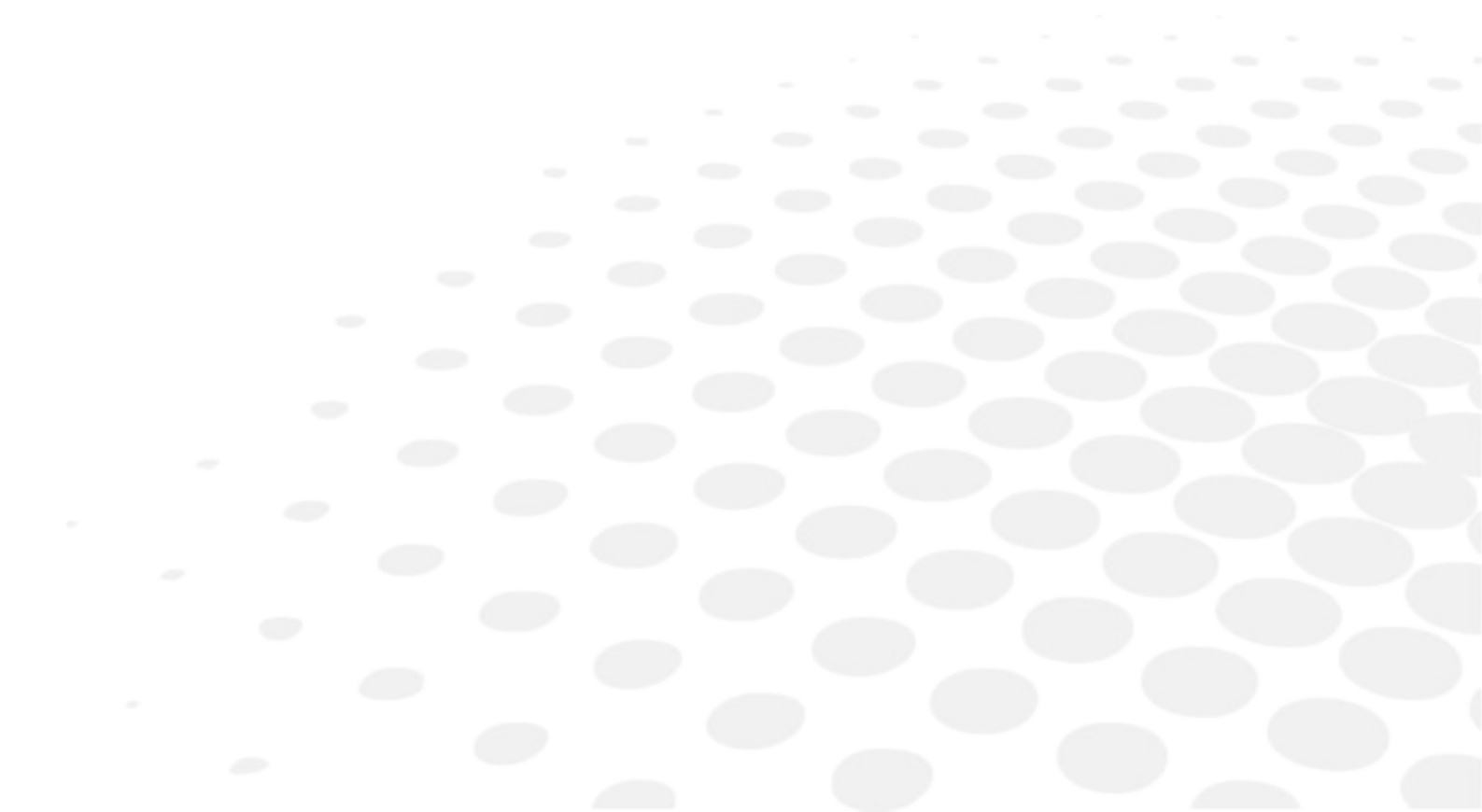
The following electronic components are used in this instrument.

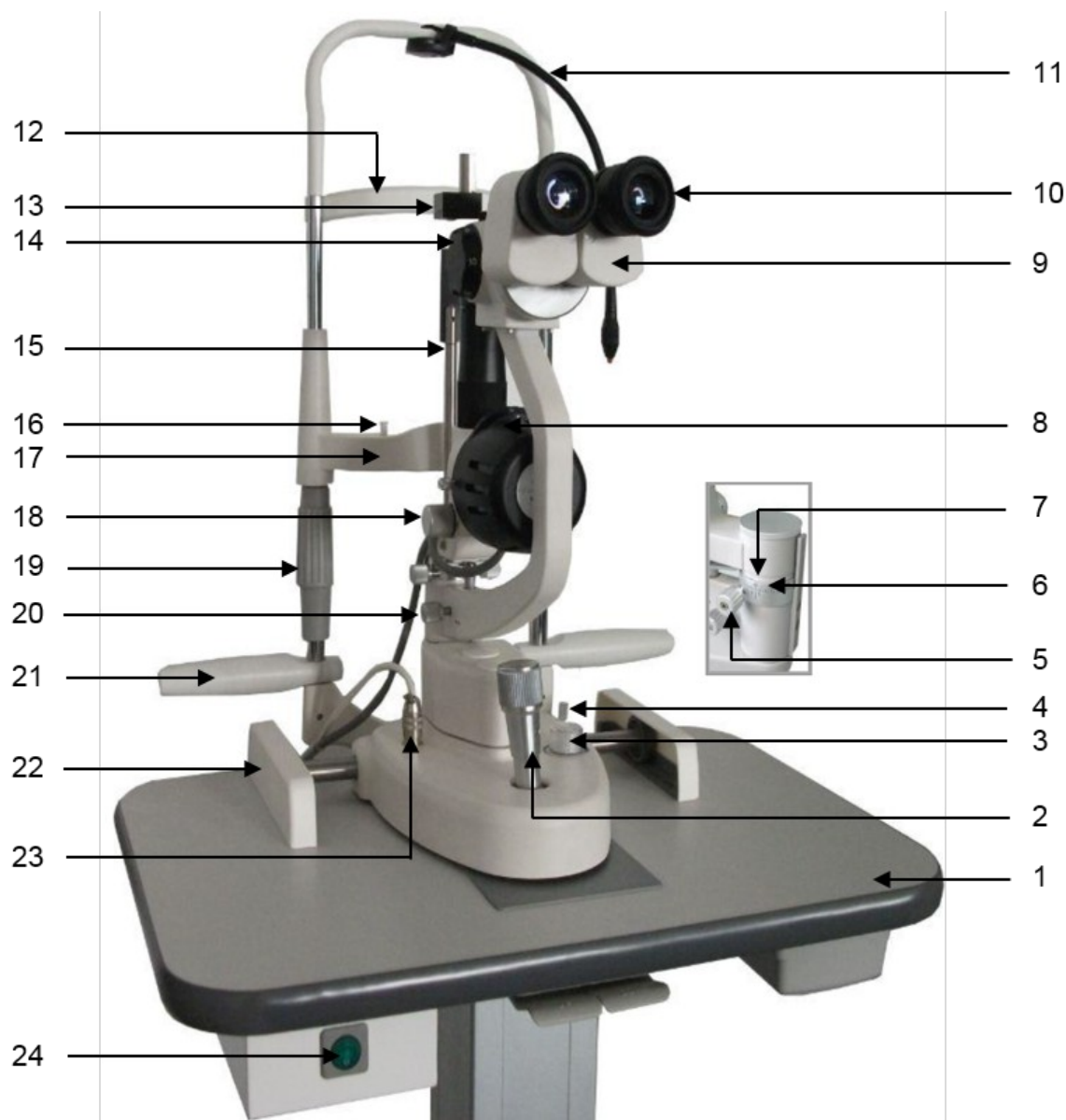
N°	COMPONENT NAME
1	Annulus transformer
2	Light dimmer potentiometer
3	SCR circuit boards
4	Power switch with indicator
5	Metal output socket with four pins
6	220V / 110V input voltage selector
7	Network power input socket
8	Light sauce (halogen/ LED lamp)
9	Fixation point
10	Fuse
11	Protective earth terminal

10. TRANSPORT AND STORAGE

No special requirements besides the content about transportation and storage of IEC 60601-1 standard.

III. NOMENCLATURE



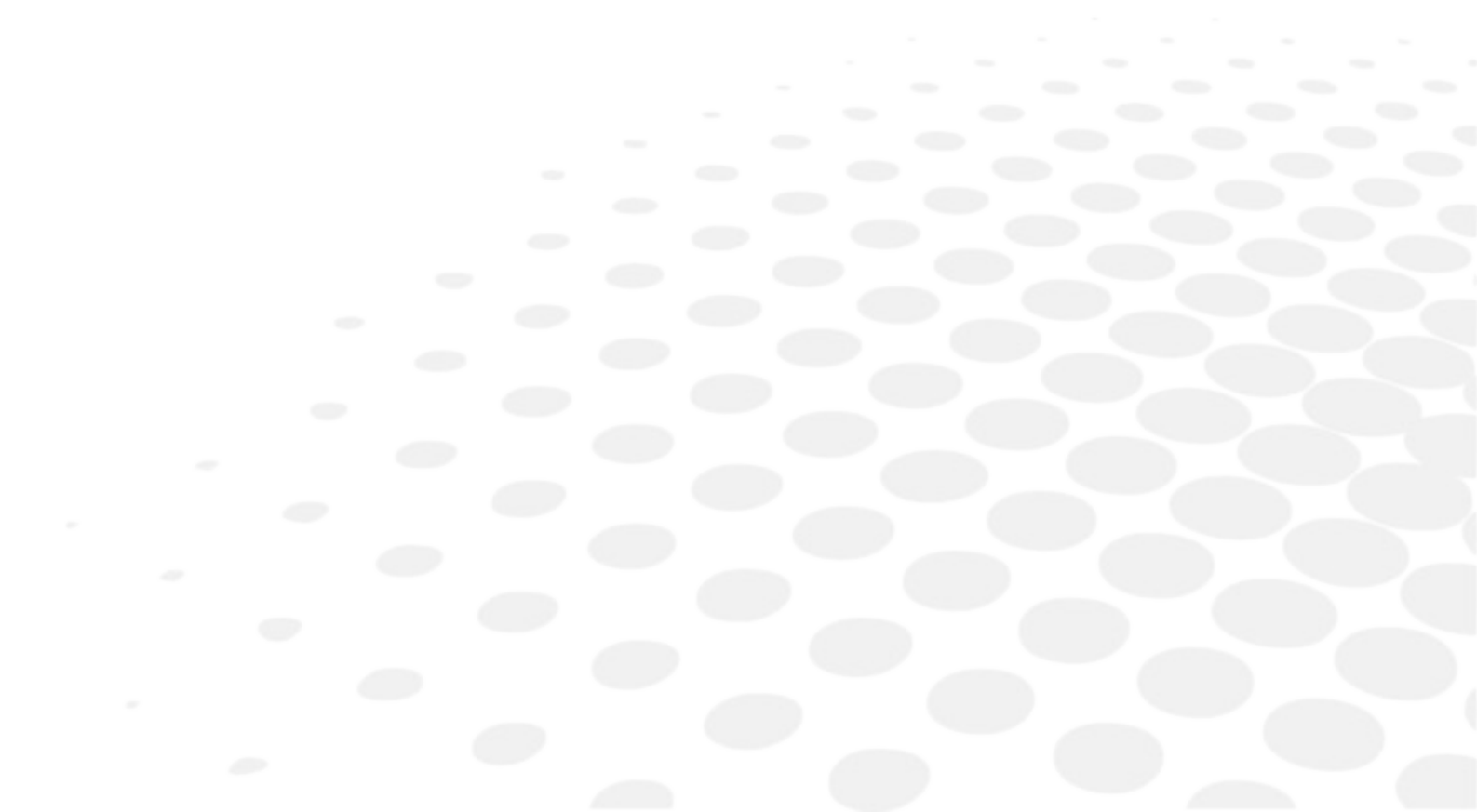


With:

N°	DESCRIPTION
1	Work tabletop
2	Joystick: Incline joystick to move the instrument slightly on the horizontal surface and rotate it to adjust the elevation of the microscope.
3	Brightness control knob: Avoid working continuously at high brightness or the service life of the bulb will be shortened.
4	Base locking screw: The base will be locked when fastening this screw.
5	Illumination arm locking knob: When locking the screw, the illumination system and checking system were connected, when loosening it the illumination system can be used separately.
6	The mark line on the ring of the microscope arm. Together with (7) to indicate the angle between the microscope and illumination unit.




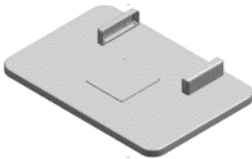
7	<p>The indicate of relative angle between the microscope and illumination unit.</p> <p>Mark on the angle mark ring of the illumination arm, which relates to the long mark of the microscope arm, represent the two arms angle when the "0" on the ring relates to the short mark at one side of the operator the right eyepiece may be blocked, and the side of the patient the left eyepiece.</p>
8	<p>The dial of aperture slit height & the dial of filter selection:</p> <p>dial it > there are a few slit heights for selection</p> <p>dial it > there are four kinds of filters for selection</p>
9	Prism box: Separate the prism box to adjust the interpupillary distance.
10	12.5X eyepieces.
11	Fixation target: Let the patient stare at it and make the patient's eyes being observed in a stationary state.
12	Forehead belt: Make patient's head in an appropriate position.
13	Applanation tonometer adapter
14	Magnification select dial: Dial it, five or three different magnification are provided.
15	Focusing test bar: In order to focus.
16	<p>Fixation knob of chinrest paper:</p> <p>It is used to fix the chinrest paper.</p>
17	Chinrest: Supporting the patient's chin.
18	Slit width control knob: The slit width is continuously adjustable within the range from 0 to 14 mm. The mark on the left knob stands for the approximant value of the width.
19	Chinrest elevation adjustment knob: Rotate the knob to adjust the elevation of the chinrest.
20	Microscope arm locking screw.
21	Handle (optional accessories).
22	Rail cover.
23	Access line and plug of the brightness control.
24	Main power switch: Turn ON the switch, the mark lamp will light.

IV. ASSEMBLY



All parts should be taken out with great care from the packing case before assembling.

1. MAIN PARTS CHECK LIST

NAME	QUANTITY	IMAGE
Chinrest part	1	
Microscope part	1	
Illumination part	1	
Tabletop part	1	
Rail cover	1	
Power cable	1	
Focusing test bar	1	
Dust proof cover	1	
Chinrest paper	1	
Screw driver	1	
User manual	1	
Packing list	1	

2. ASSEMBLY PROCEDURE

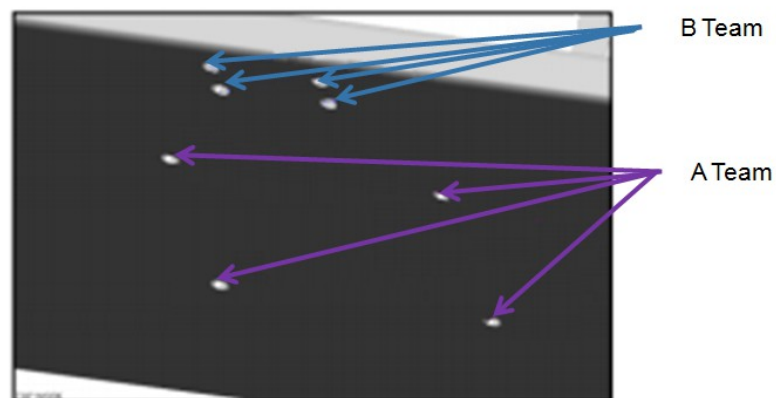
- 1 Open the box, and take out the tools: cross screw driver and spanner.
- 2 Check the setting on the voltage selector located on the bottom of the power box according to local network voltage.

We provide two voltage options: 220V / 110V.



A F1AL250V fuse has been inserted into the power box. Spare fuse are provided in the box.

- 3 Remove "A team" screws (4*M6 x20mm) under the tabletop.




- 4 Lift the tabletop to align its screw holes to the assembly holes of the instrument table and fix the tabletop with the power switch facing to the operator.

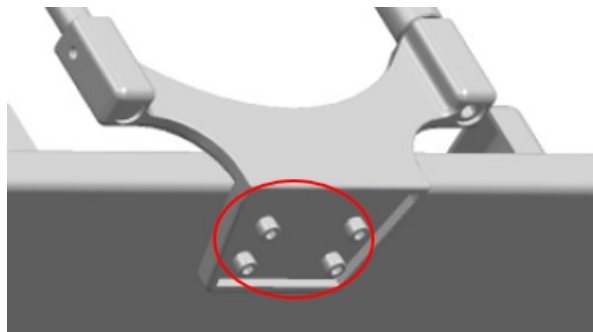


- 5 Connect two white adapters under table board.

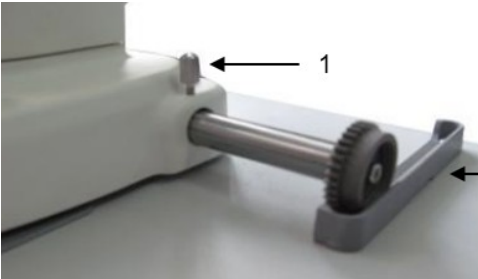

Turn ON and press "Up & Down" switch to check whether the power table works well.

	<ol style="list-style-type: none"> 1. "Up & Down" switch 2. White adapters
-----------------------------------------------------------------------------------	--------------------------------------------------------------------------------------------------------

- 6** Remove the four screws of "B Team" with screw driver, and fix the chinrest part to the tabletop in the way as below.



- 7** Take out the slit lamp part, put it on the rails of the tabletop, and ensure the gears well connected. Move the base to confirm the wheels rolling steadily and then cover the rails with rail covers.

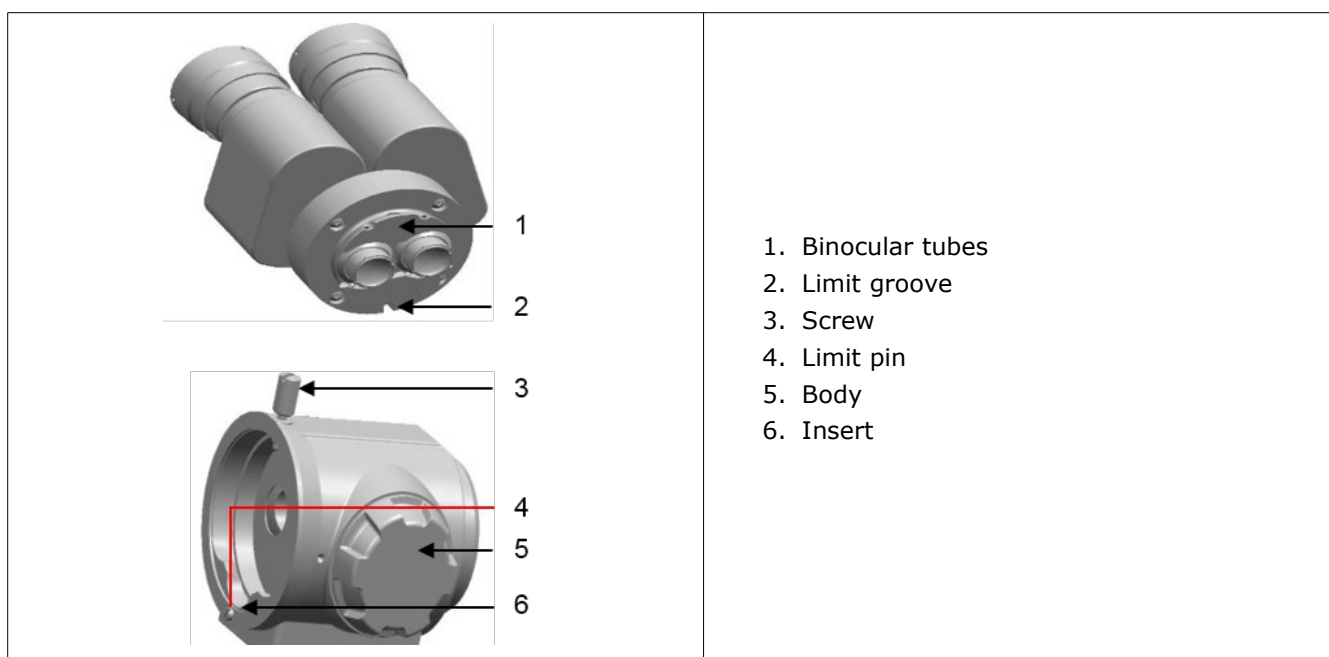
	<ol style="list-style-type: none"> 1. Locking screw on base 2. Rails
	<ol style="list-style-type: none"> 1. Rail cover

8 Take out the binocular tubes of microscope part.

Match the groove on the binocular tubes with the pin on the microscope body. Fasten the fixing screw on the body to the microscope.



Don't touch the objective lens and eyepieces during assembling.

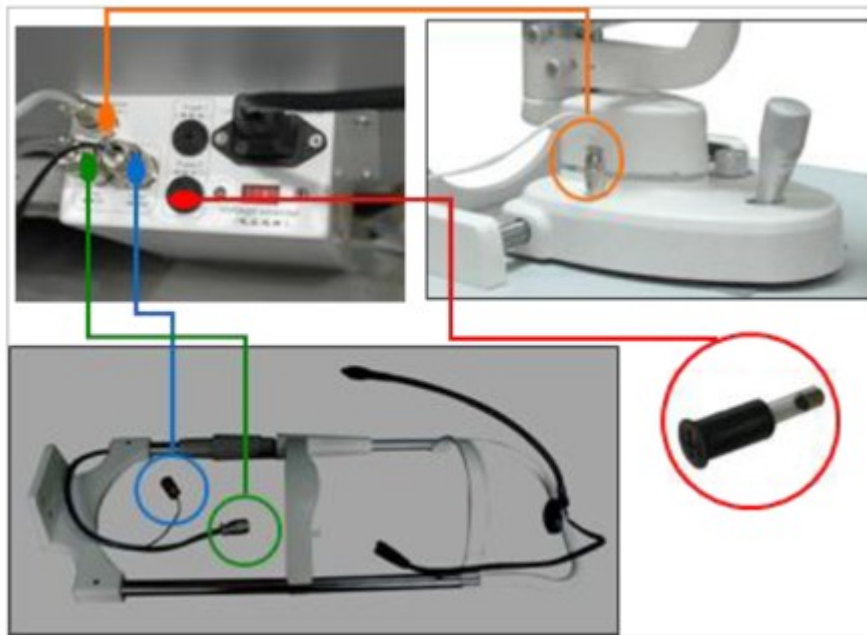


9 Make sure the main power plug is not connected.

Take out the wire of brightness control knob on the base and connect it to the corresponding socket on the power box. Insert the plug of chinrest bracket in the correct socket, and fasten it.



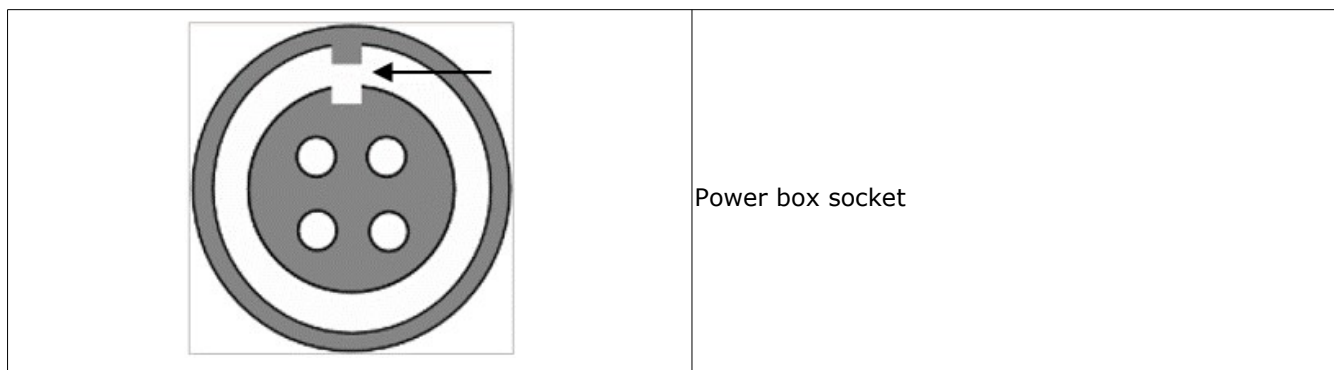
1. Brightness control knob socket
2. Illumination lamp socket
3. Fixation lamp socket
4. Fuse box
5. Power socket
6. 110V / 220V voltage selector



10 Check the voltage selector, this power box support working under the voltage of 110V and 220V.



Please select the right voltage according to the voltage in your country.



There is a limit groove on the socket. Please align the plug with the groove.



Wrong power selection may lead to damage of the instruments.

11 Open the fuse box and make sure there is a fuse assembled.

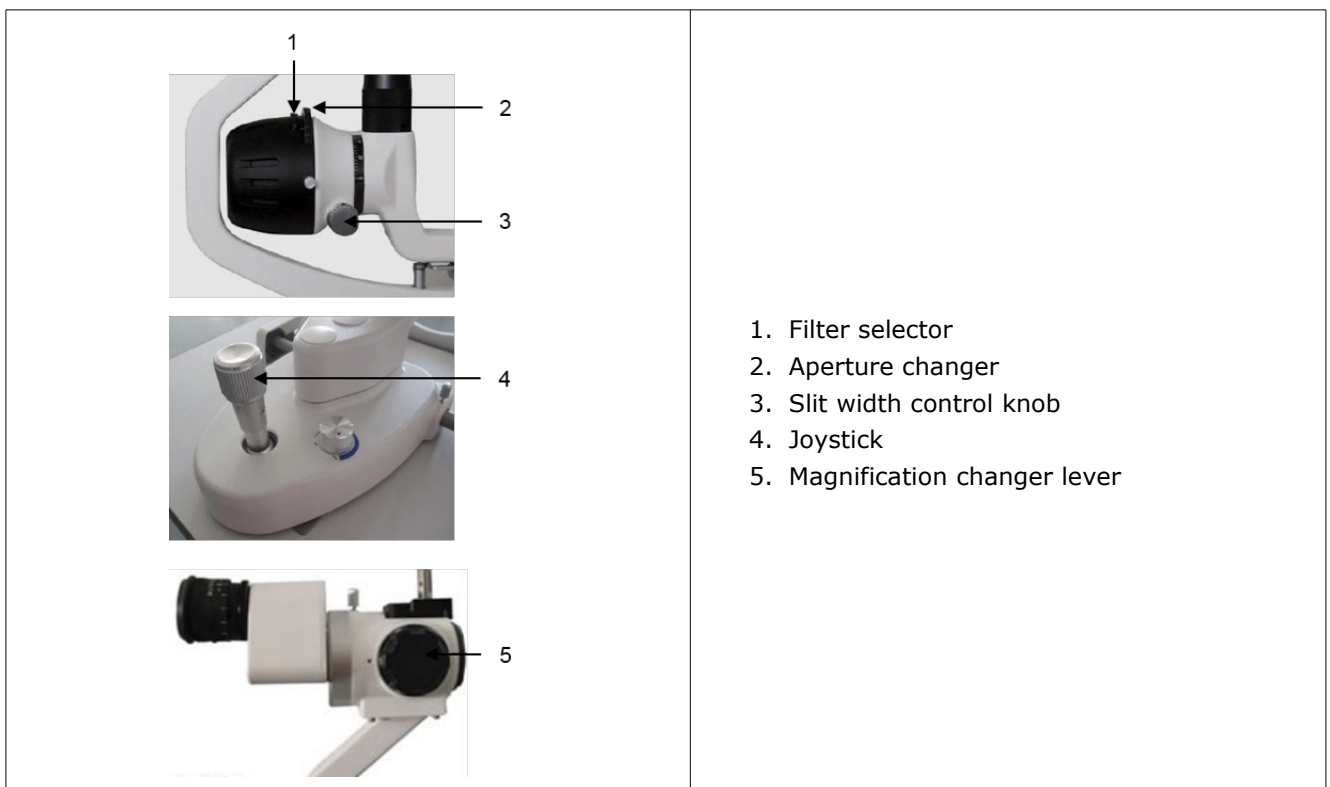


Specification of the fuse: F1AL250V.

12 Collect tools and spare parts and put them into the drawer under the right side of tabletop.

3. CHECKING PROCEDURE

- 1 A 3 pin cable is supplied with this instrument. Correct plug is supplied as well. Ensure the instrument is grounded.
- 2 Marks on the power switch: "I" means power ON and "O" means power OFF. The main power switch should be set at the "O" position before connecting the input cable with the power socket.
- 3 The indicator lamp will be lighted when the instrument is power ON.
- 4 Insert the focus test bar to right position. A light spot will be projected on the focus test bar. Rotate the slit width knob to adjust the width of the spot and the light dimmer to adjust its brightness.
- 5 The fixation target is lighted.
- 6 Check the following part works flexibly:

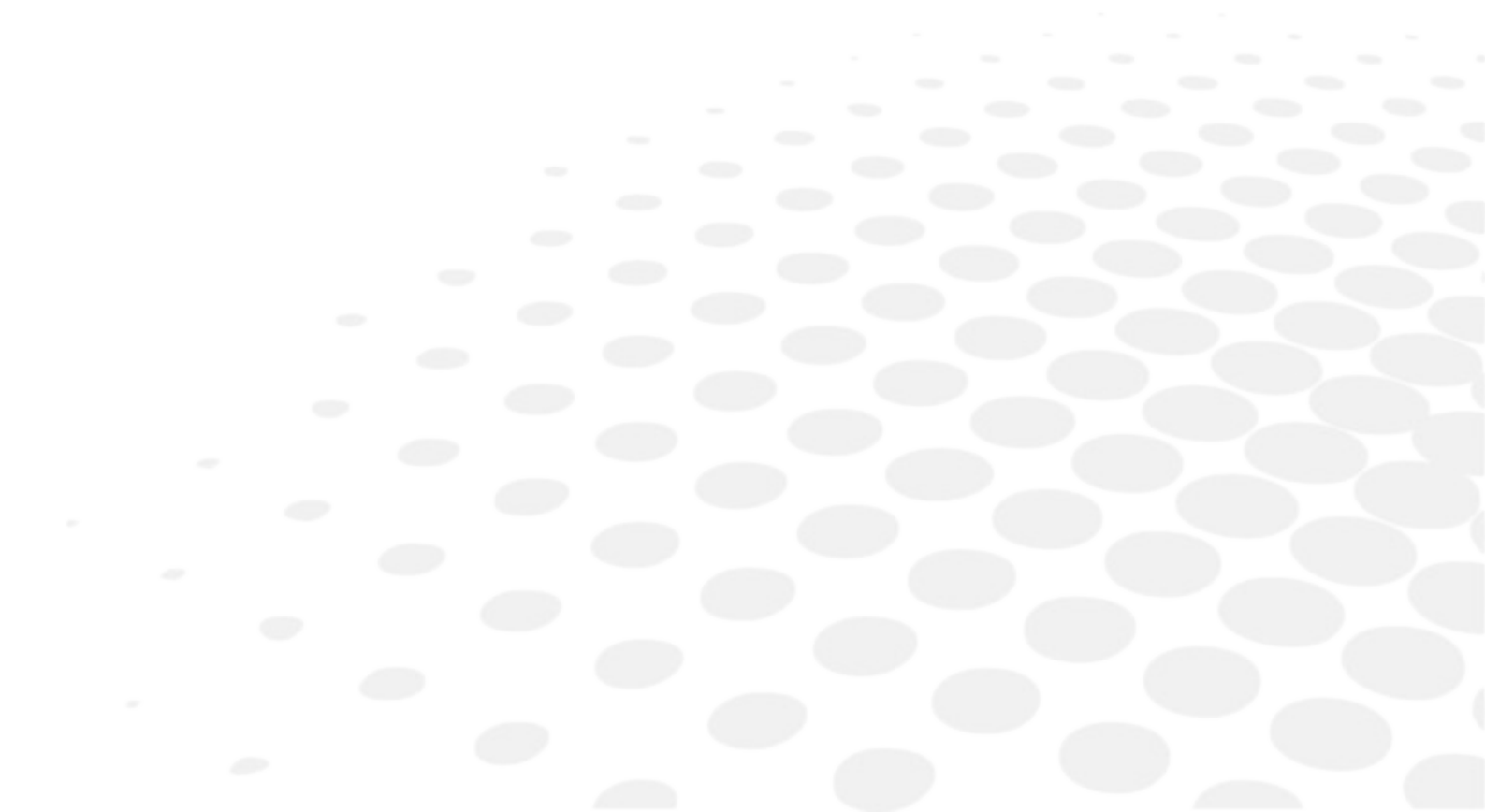


- 7 Rotate the light dimmer knob and the brightness will go dim.



- 8 Turn OFF the main power and cover the instrument with the dust-proof cover after testing.

V. OPERATION PROCEDURES



1. PREPARATION FOR DIOPTER COMPENSATION AND IPD ADJUSTMENT

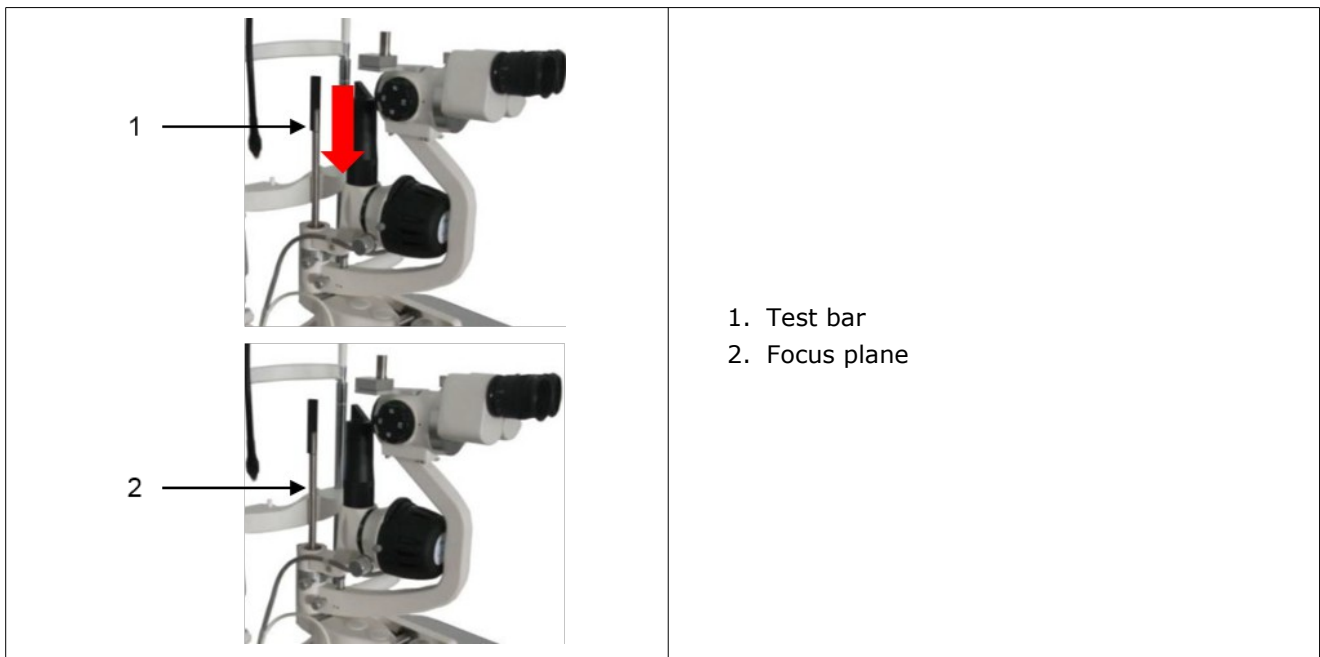
Use the focusing test bar

- 1 The bar is a standard accessory for accurate adjustment of the microscope.

Insert it into the correct position of slit lamp. With the focal plane facing to the objective lens.

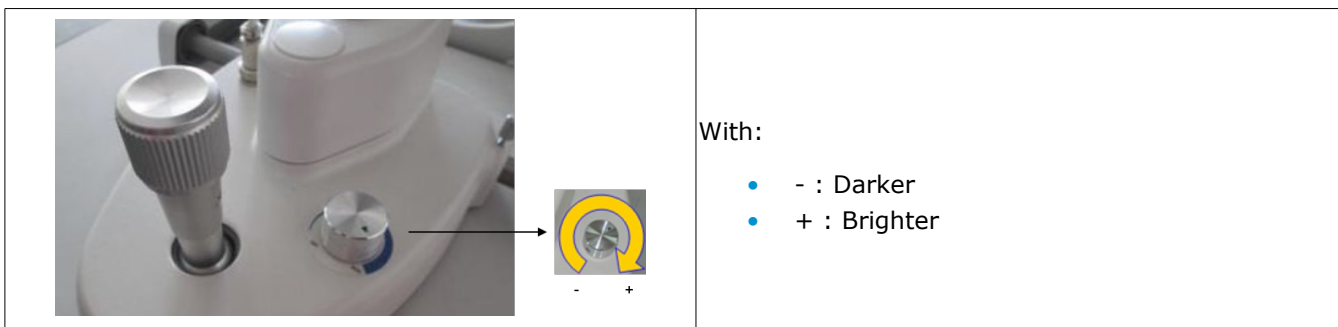


Remove the bar after testing.



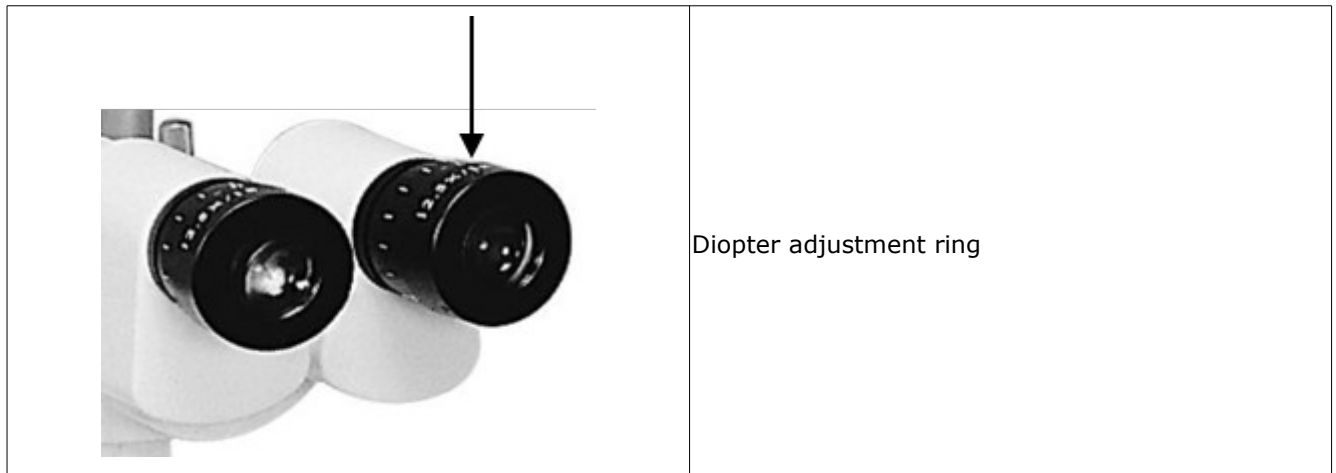
Brightness adjustment

- 1 Switch ON the main power.
- 2 Rotate the light dimmer to the central position.
- 3 Set the slit width at 2~3 mm.



Adjustment of diopter compensation

- 1 The focus plane of microscope is calibrated according to the emmetropia. If the operator is ametropia, he should adjust the eyepiece diopter (see picture below) according to the following procedures:



- 2 Rotate the diopter adjustment ring counter-clockwise to the end.

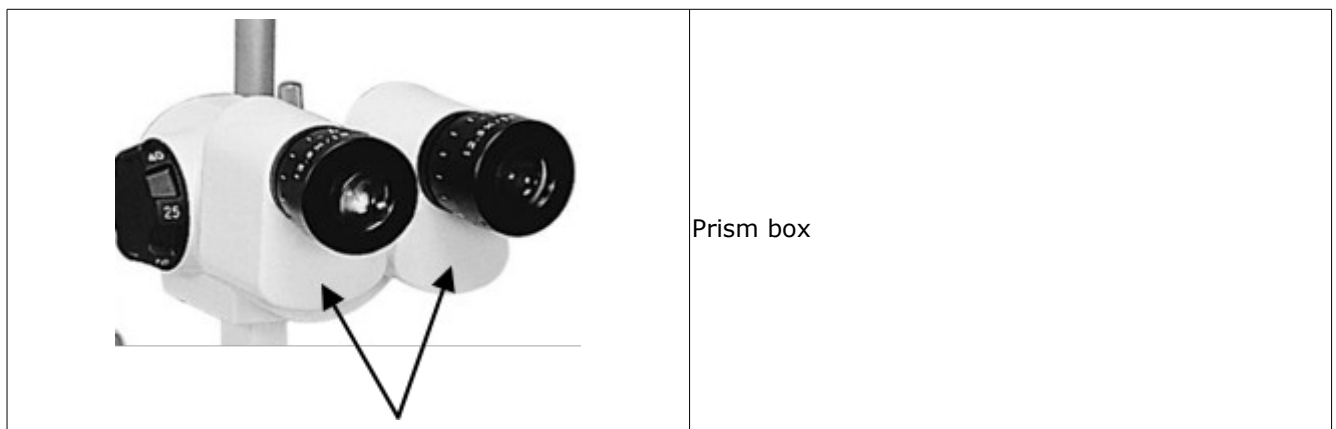
- 3 Rotate the ring clockwise until the slit image is sharp.

Adjust the other eyepiece in the same way.

- 4 If necessary, record the diopter value on each eyepiece for future reference.

IPD adjustment

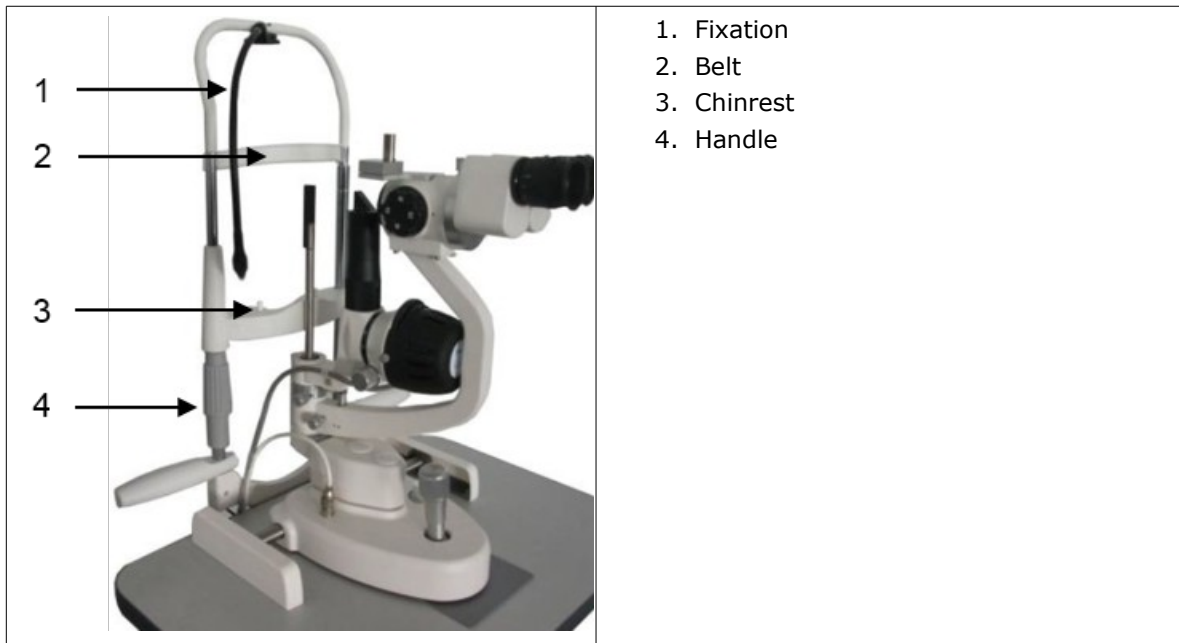
- 1 Separate the prism box of the microscope to adjust the P.D to get a stereo vision through the microscope.



2. PATIENT POSITION AND USE OF THE FIXATION POINT

The patient should put chin on the chinrest and push forehead against the forehead belt.

- 1 Adjust the elevation of chinrest until the light of slit lamp projects to the correct position of patient's eye.



- 2 Move the tube to put the fixation target at a proper position.

The fixation point is used to attract patient's attention.

3. BASE OPERATION

Horizontal rough adjustment

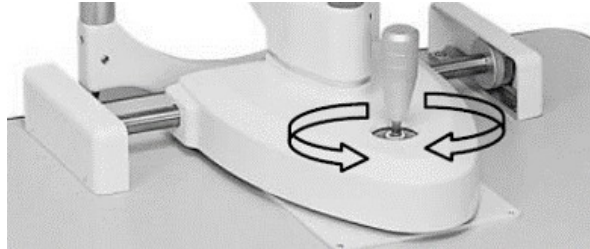
- 1 Move the base back and forth to align microscope with patient's eye.

Vertical adjustment

- 1 Rotate the joystick to adjust the microscope's height until it is perfect to observe the patient's eye.
- 2 Rotate the joystick clockwise to raise the microscope and counter-clockwise to lower it.

Horizontal fine adjustment

- 1 Tilt the joystick to move the microscope slightly on the horizontal surface and watch through the eyepieces until a clear and sharp image appear on the field.



Locking the base

- 1 When finishing the adjustment, fasten the base locking screw to lock the base and prevent it from sliding.



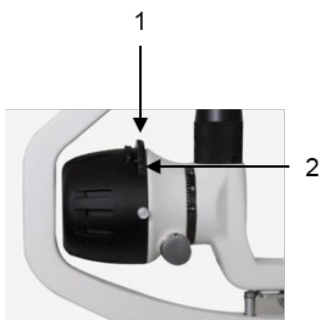
Locking screw

4. OPERATION OF ILLUMINATION SYSTEM

Changing the aperture and slit height

- 1 Rotate the aperture and slit height dial to get four round light spots of different diameter sizes: 14 mm, 8 mm, 3.5 mm, and 0.2 mm.

Besides the round spot, a wedge-shaped continuous slit spot will be got, whose length is from 1 mm to 14 mm. The value can be read on the aperture dial.



1. Aperture
2. Rotate the dial

Rotating the slit lamp

- 1 Swing the aperture and slit height control knob horizontally to revolve the slit image at any angle from vertical to horizontal direction.

The angle of image rotation is indicated by the rotation angle scale with small division for 5° and large division for 10°.



Filter selection

- 1 By rotate the filter dial, three different filters are provided.

For general observations, the heat-absorbing filter is placed in position.

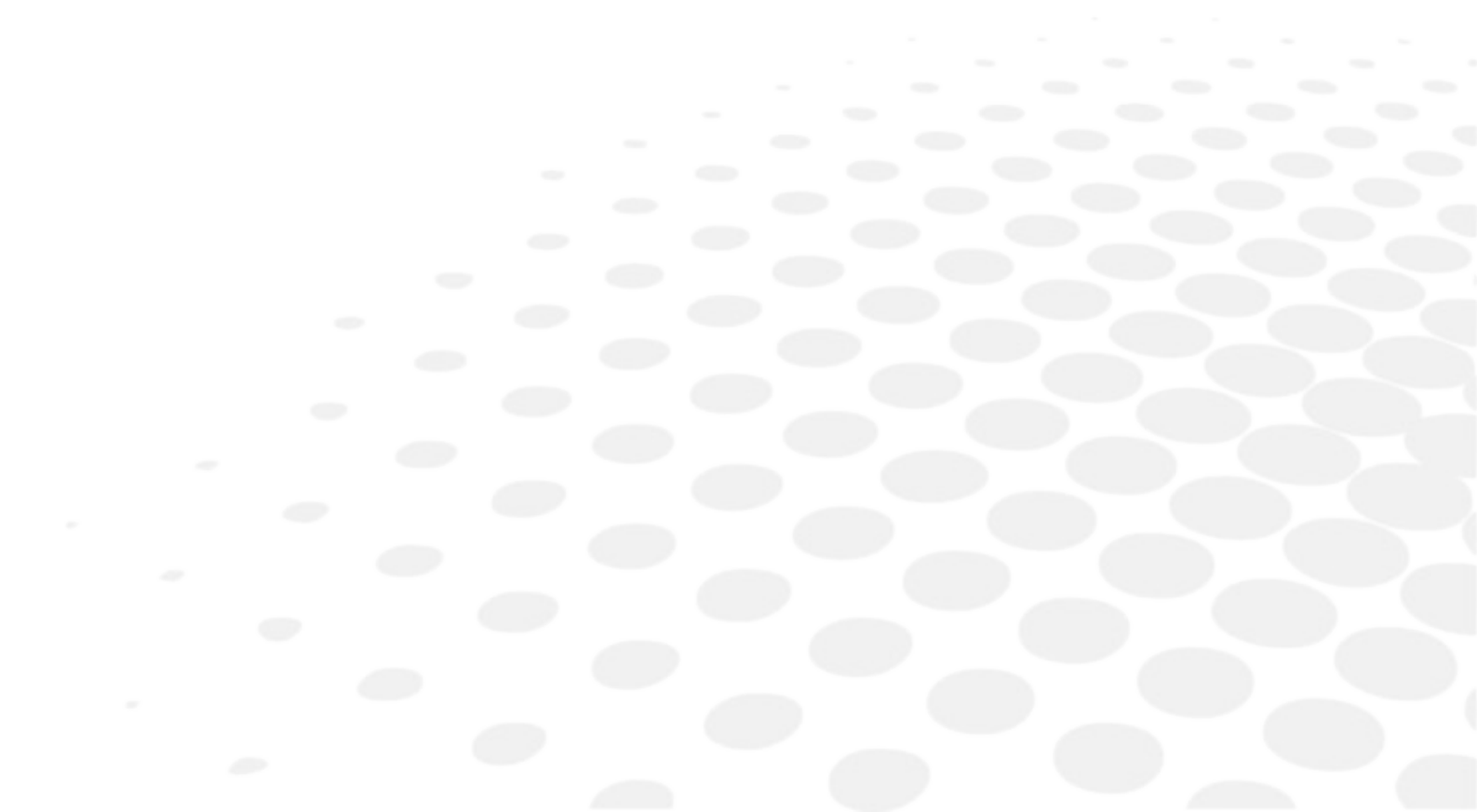
- 2 Set the head the heat-absorbing filter in position after using the other filters.

5. TIPS OF OPERATION PROCESS



- Read this user manual carefully to learn the structure and function of slit lamp for using the instrument properly.
- In order to prevent the unnecessary observation misjudgment, read the scales on each knob carefully.
- Operator should adjust the inter-pupillary distance and diopter correctly in advance in case feeling uncomfortable during observation.
- Operator may feel dizziness in a long time observation. Take a rest after long time using of the slit lamp.
- The patients' eyes will be exposed to the light of slit lamp. The light should be strong enough for observation. Stop observation, if the patient feels uncomfortable. For serious situation please seek for medical treatment. Therefore, avoid prolonged exposure of patients' eyes in strong light.

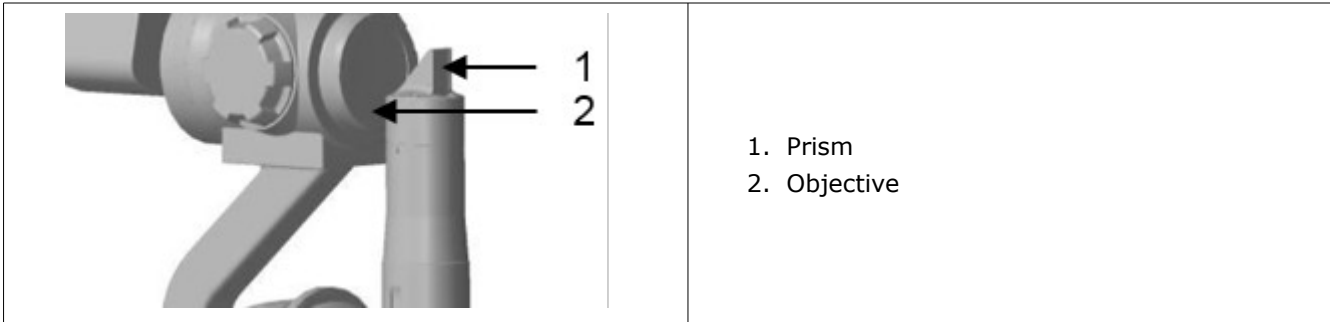
VI. CLEANING



1. METHOD

Cleaning the lens and reflecting mirror

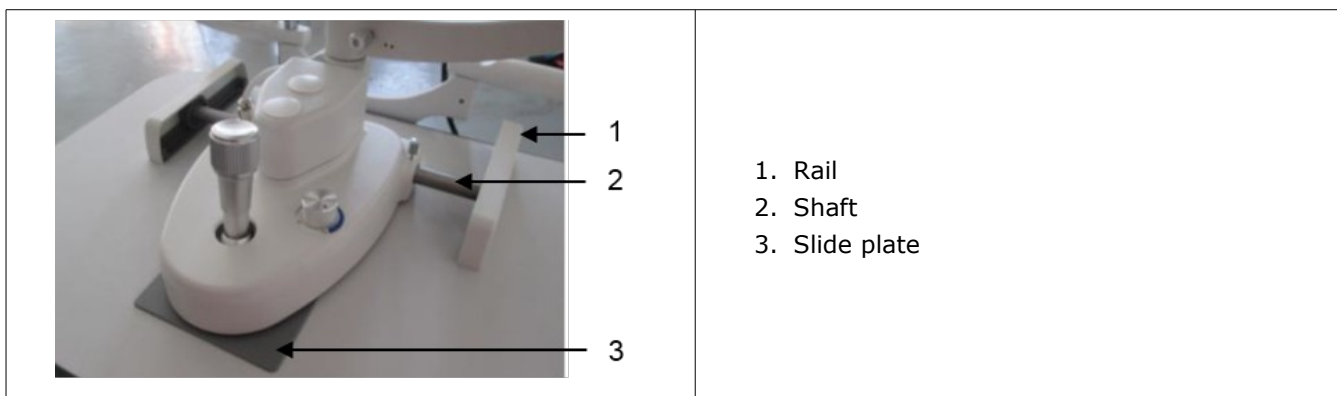
- 1 If there is any dust on the lenses or reflecting mirror, wipe it off with soft cotton dipped in absolute alcohol.



Do not touch the lens with finger or hard object.

Cleaning the sliding pad, rails and shaft

- 1 Clean these parts with clean soft cloth regularly to ensure the stable movement of slit lamp.



Cleaning and disinfecting the plastic parts

- 1 Clean the plastic parts such as chinrest bracket, forehead-rest belt with soft cloth dipped in soluble detergent or water, and then disinfect these parts with medicinal alcohol.



Don't wipe these parts with any corrosive detergent in case any surface damage caused.

2. CLEANING CYCLE

It required that the slit lamp should be stored and used in a clean environment. For prolong the service life of the instrument please clean it regularly per as suggestions below.

1. Clean the eyepieces, objective lens and reflecting mirror:

Cycle: suggested once per two months.

The lenses and mirror are coated with antireflection coating and the reflective film. Although the coating is strong enough, frequent wipe will lead to damage to the film, and thus affect the observed optical effect.

2. Cleaning the slide pad, rails and shaft:

Cycle: suggested once per month.

Usually, these parts won't get dirty in normal use. We suggest cleaning these parts once per 6 months for getting smoother movement experience.

3. Cleaning the plastic parts:

Cycle: suggested once per day

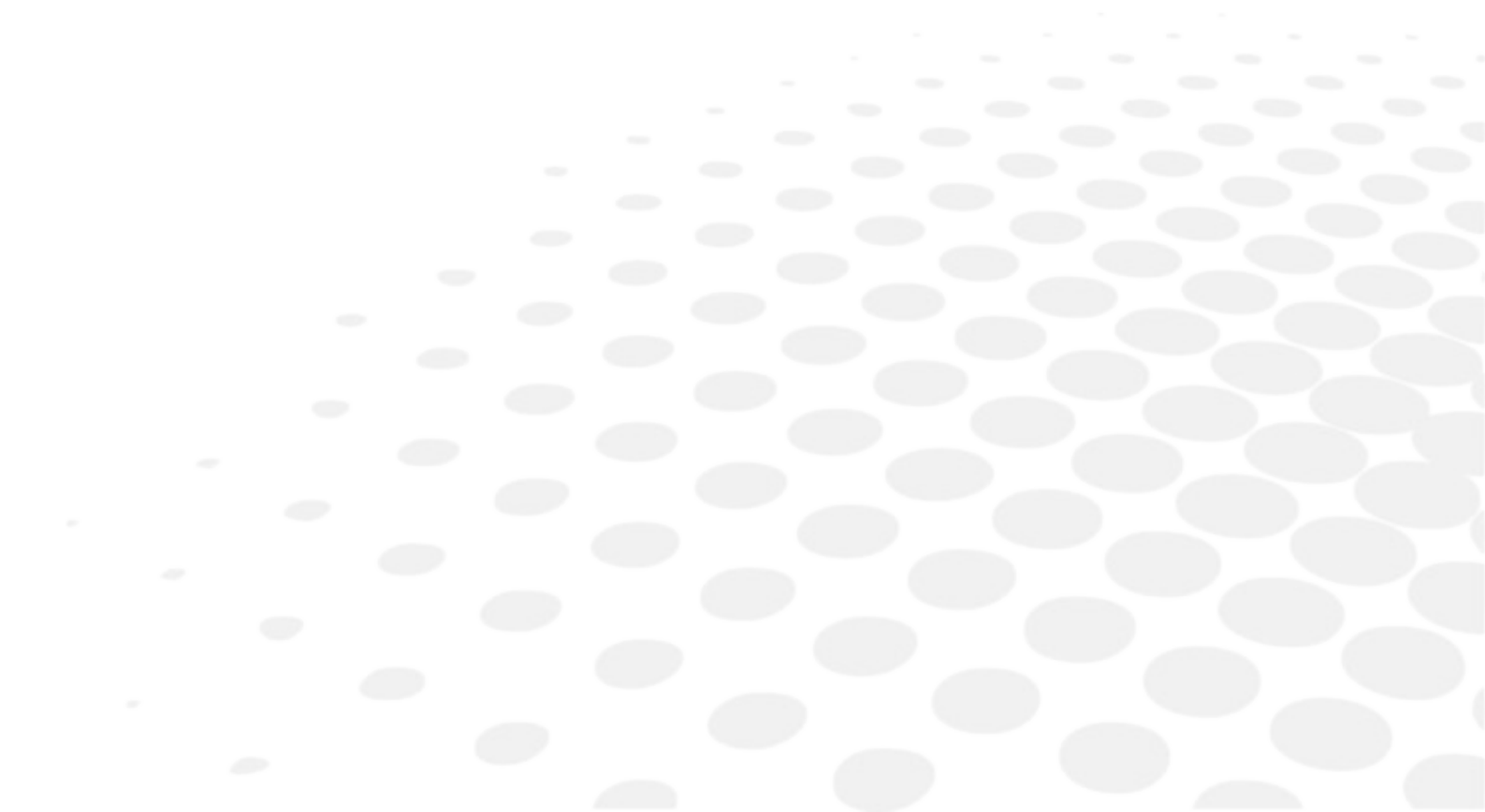
These two parts contact with the patients directly, so please clean and disinfect these two parts timely. Replace a piece of new and clean chinrest paper for each patient.

4. Cleaning the whole machine:

Cycle: suggested once per two months.

Life cycle of the slit lamp: 4 years.

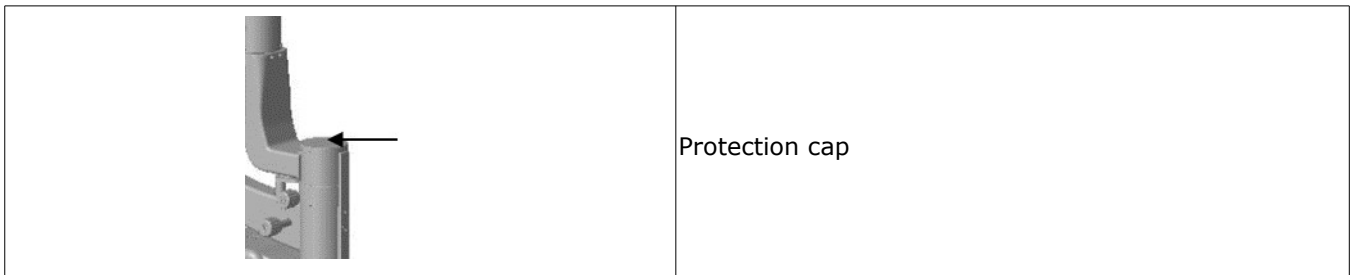
VII. MAINTENANCE



Correct and periodical protection and maintenance will prolong the service life of the slit lamp. The suggested maintaining cycle is once per two months.

1. PROTECTION

Cover the main shaft hole with the protection cap to prevent any dust drop in. Remove the cap when the focus test bar needs to be assembled.



2. HOW TO REPLACE THE FUSE



The rated value of fuse for this instrument is indicated in the safety marks table.

The specification of fuse is also marked on the power box. Spare fuses are provided with this instrument. For more fuses, purchase from your local supplier.

1 Switch OFF the main power and remove the power cable from socket.

2 The fuse is inserted in the fuse box which has fuse mark.

Please rotate the fuse part out by pressing the fuse box with a screw or a coin.

One fuse is in use, the other is in spare. Please check them, if the one in use is burnt, please replace it with the spare one and then place both the two fuse parts into original place.



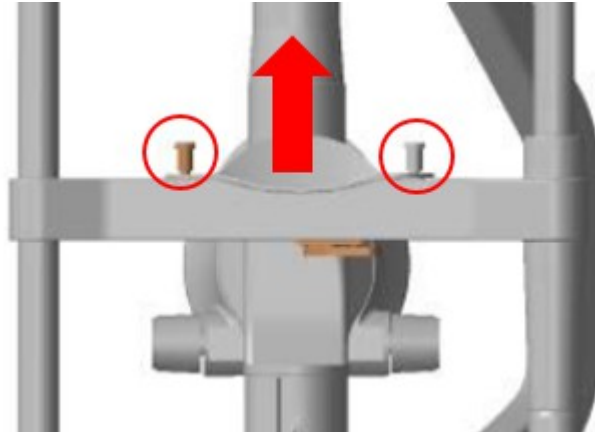
Fuse specification: F1AL250V



Please select fuse of the same type, specification and rate value.

3. HOW TO REPLACE THE CHINREST PAPER

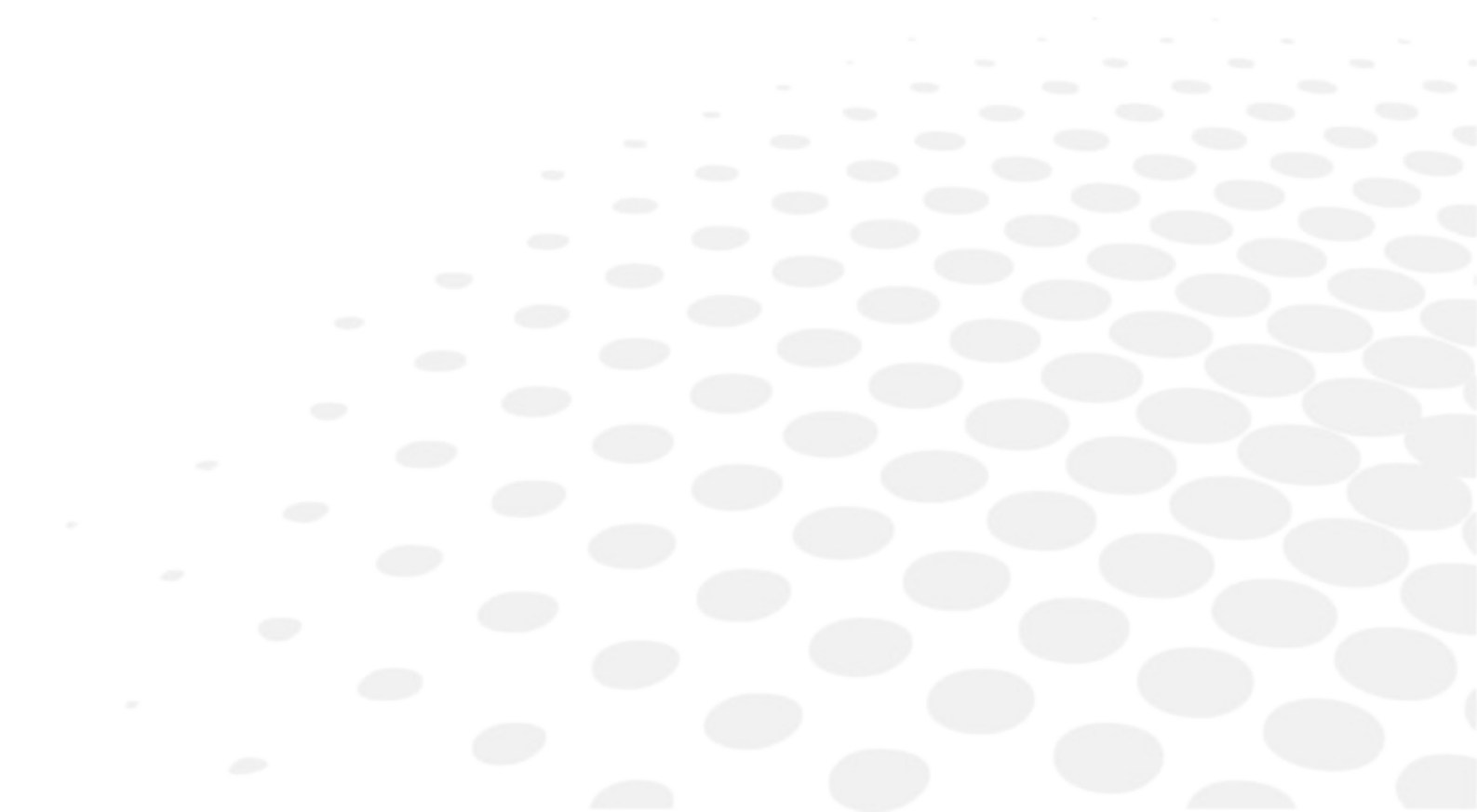
- 1 Remove the two fixation bolts and place the new papers.



4. CONSUMABLES

Fuse: F1AL250

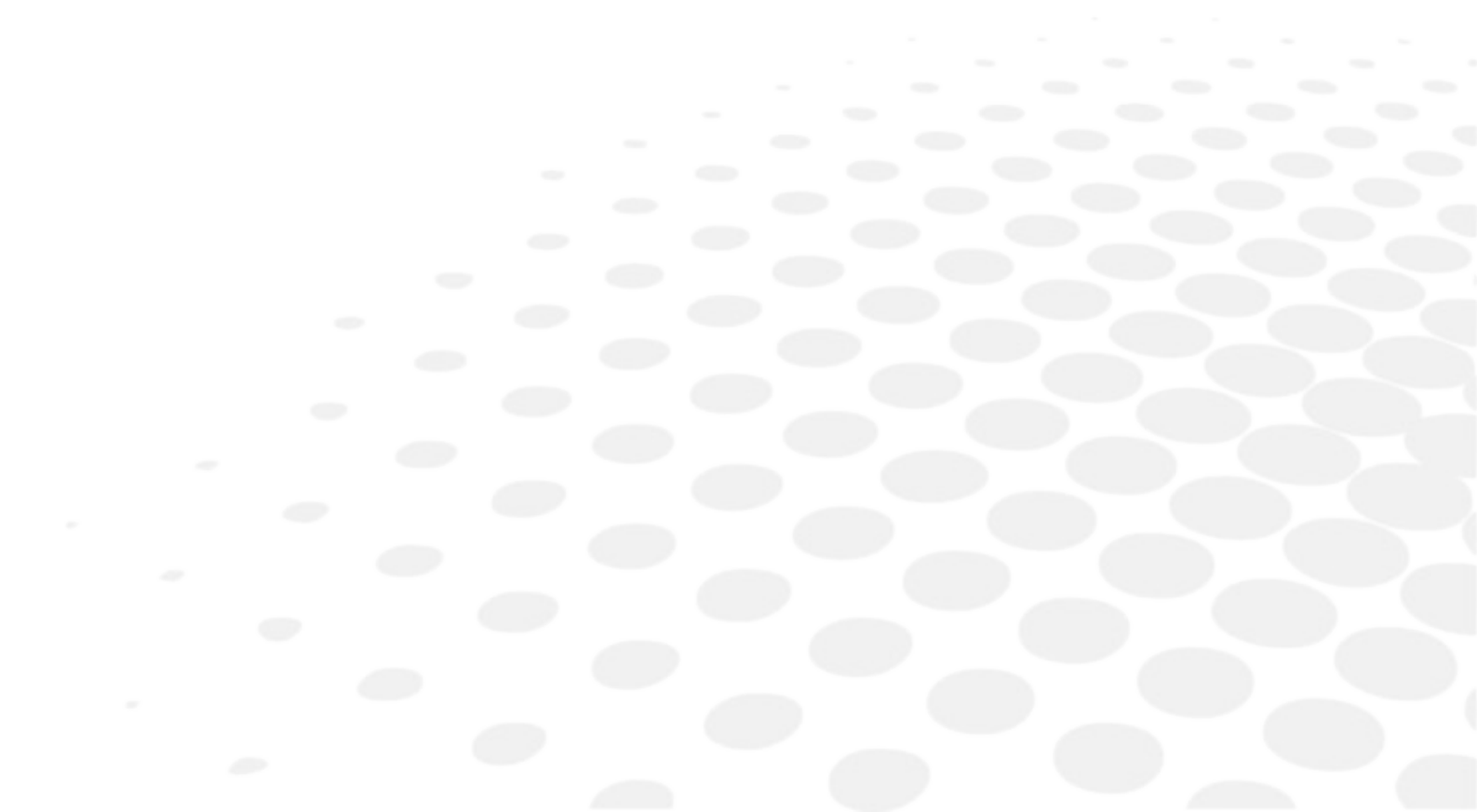
VIII. TROUBLESHOOTING GUIDE



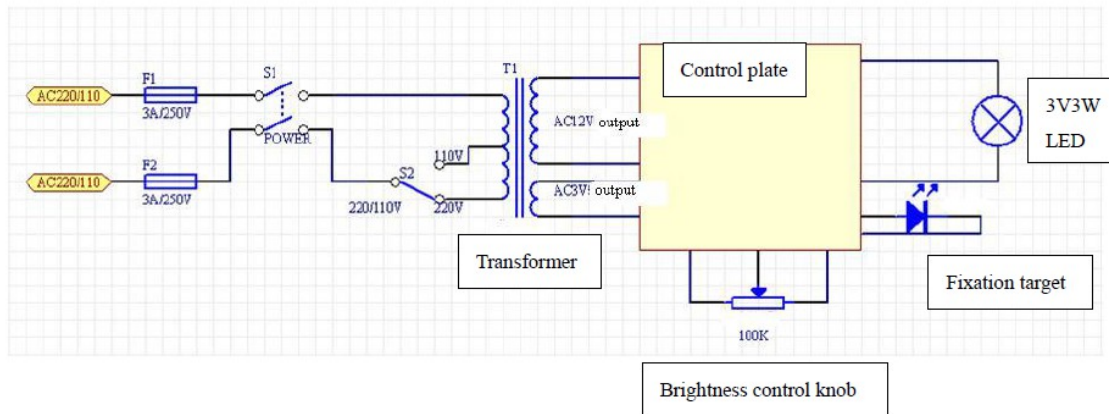
In case there is any trouble, please check according to the following table for reference. If it still cannot work, please contact the repair department of an authorized distributor.

TROUBLE	POSSIBLE CAUSE	REMEDY
No illumination	The cable isn't connected correctly with the power socket	Connect the power cable correctly
	The main power switch is on "O" position	Place the switch on "I" position
	The plug on the power box is loosen	Insert the plug firmly
	The plug on the lamp cap is loosen	
	The bulb has burnt out	Change the bulb
	The fuse has blown	Change the fuse
	The bulb is not assembled properly	Assemble the bulb properly
	The filter lever is in the middle position or in the position of gray filter	Set the filter lever to the correct position
	The brightness adjustment knob is at minimum	Set the brightness adjustment knob
Slit is too dark	Voltage selector is wrongly set	Set the voltage selector correctly
	The coat of the reflecting mirror is oxidized	Change the reflecting mirror
	Too much dust on the reflecting surface	Clean the surface with the brush
Fuse has blown	Voltage selector is wrongly set	Set the voltage selector properly
	The fuse doesn't comply with the specification	Replace it with a suitable fuse
Slit width closes automatically	The slit width control knob is too loose	Adjust the tightness of the control knob
Fixation bulb is off	The output plug is loose	Insert the output plug firmly

IX. APPENDIX



Electrical circle drawing





Essilor Instruments USA

8600 W. Catalpa Avenue, Suite 703

Chicago, IL 60656

Phone: 855.393.4647

Email: info@essilorinstrumentsusa.com

www.essilorinstrumentsusa.com